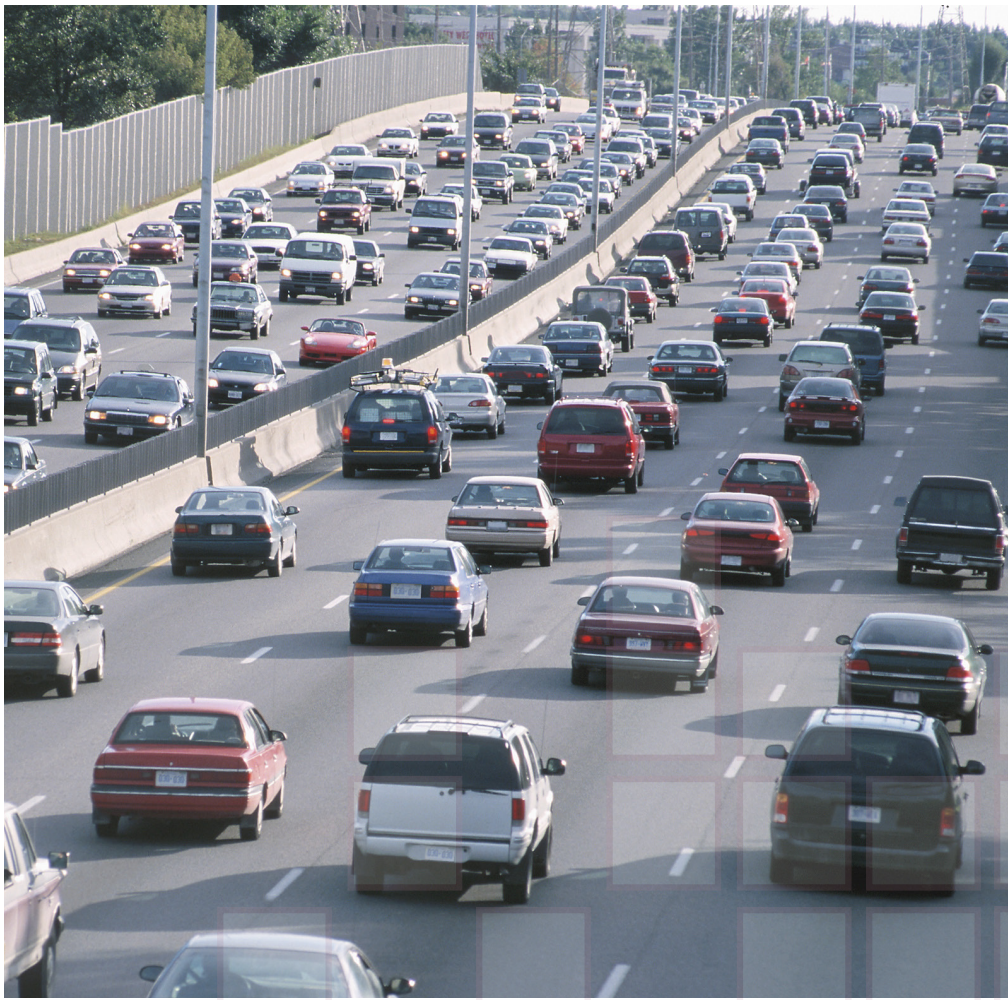


WHO'S **PREVENTING ACCIDENTS** IN THE WORKPLACE?



Addressing motor vehicle safety in the workplace makes
GOOD BUSINESS SENSE.

Did you know? In Missouri over 900 people die in traffic crashes each year. Half of those victims were not wearing seat belts. To keep you and your co-workers safe, follow these safe driving tips:

- Everyone must wear seat belts.
- Always drive at a safe speed.
- Don't tailgate other motorists.
- Scan the road ahead for traffic issues.
- Control distractions in the vehicle.
- Focus on the road and have a safe trip!

DRIVE SAFELY. ARRIVE SAFELY.

Work **SAFE**

www.worksafecenter.com

For more information, visit www.worksafecenter.com.

The MEM Difference

MEM
Missouri Employers Mutual