

TOOL BOX TALKS

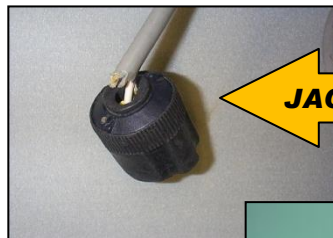
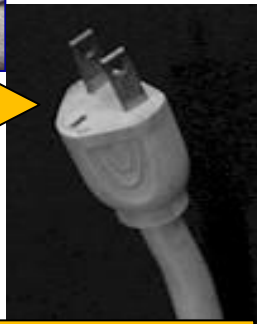
Unsafe Electrical Hazards

Be alert to electrical hazards on the jobsite. Extension cords must be in good shape, free of nicks, cuts and tape repairs, and must have a ground prong. Outlet boxes must be fully enclosed. Circuit breaker panels must be enclosed, with no holes. Wiring must be protected from damage. Remember that – people feel a shock when electricity seeks path to ground. That means that electricity is flowing through the body to the ground. Review these safety tips:



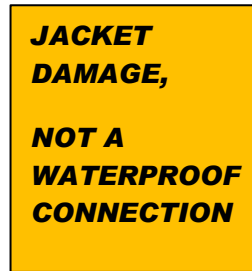
OPENING IN PANEL

GROUND MISSING

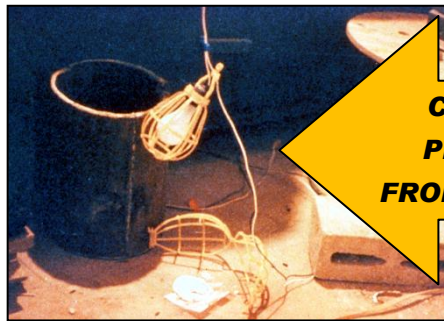


JACKET DAMAGE

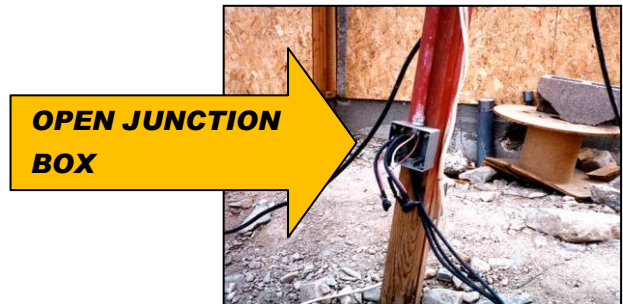
JACKET DAMAGE



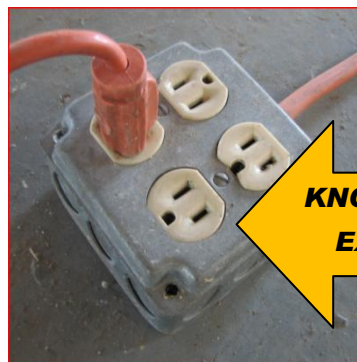
**JACKET DAMAGE,
NOT A
WATERPROOF
CONNECTION**



**CORDS NOT
PROTECTED
FROM DAMAGE**



**OPEN JUNCTION
BOX**



**KNOCKOUT BOX ON
EXTENSION CORD**

Work SAFE

Smart, Accident-Free Environments

